



FOCUS SEN Group

An inclusive group for young people with additional needs and disabilities



Wednesdays

7pm - 9pm

£3 Gateway card holders
£4.50 Non Gateway card
holders

For ages 11 to 25 years



Location - Genesis Centre, Centre Way, Locks Heath, Hampshire, SO31 6DX

What is FOCUS?

Focus SEN youth club is an inclusive group for young people with additional needs and disabilities, including physical and learning disability. The group offers a safe space for young people to engage with each other, where they can build their skills and meet with others.

On offer every week are games, wii, table tennis, and arts. The programme includes cooking, trips, and regular youth forums for young people to be involved in the planning and delivery of their youth club.

The club is staffed by a qualified youth worker and staff with experience in working with disabilities.



Meet the team



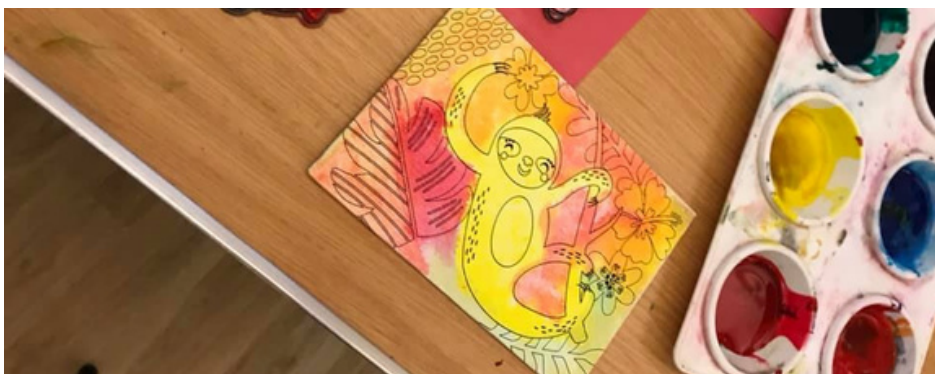
Fi Durrant - Lead Worker Fi has vast experience working and volunteering with young people. "Children and young people should be nurtured and encouraged, it is important to keep planting seeds because you never know when they will bloom."

Alongside Fi are our invaluable volunteers.

Stu - Stu has volunteered for over 10 years with the SEN group and has used the experience to support his CV.

Stu enjoys running quizzes and games for the group and is a much cherished volunteer.

Joy - Joy is our craft queen and there's nothing she can't make with a glue gun and some felt. Joy understands what life is like for our disabled young people and their families, and not only provides support to our members but also their parents and carers, using her own experiences to help others.



Search - **Y Services**



Supported by

